

\$9,000,000 - 11552 Glades Cut Off Road, Port Saint Lucie

MLS® #RX-10483968

\$9,000,000

Bedroom, Bathroom,
Land on 17 Acres

COPPER CREEK, Port Saint Lucie, FL

18 acres of vacant commercial land zoned for a 145,000 sq. ft. Shopping Center-Part of a PUD subdivision with Lennar building about 600 homes and a school grades kindergarten through grade 8 already exists in the PUD-This land is right behind PGA Village

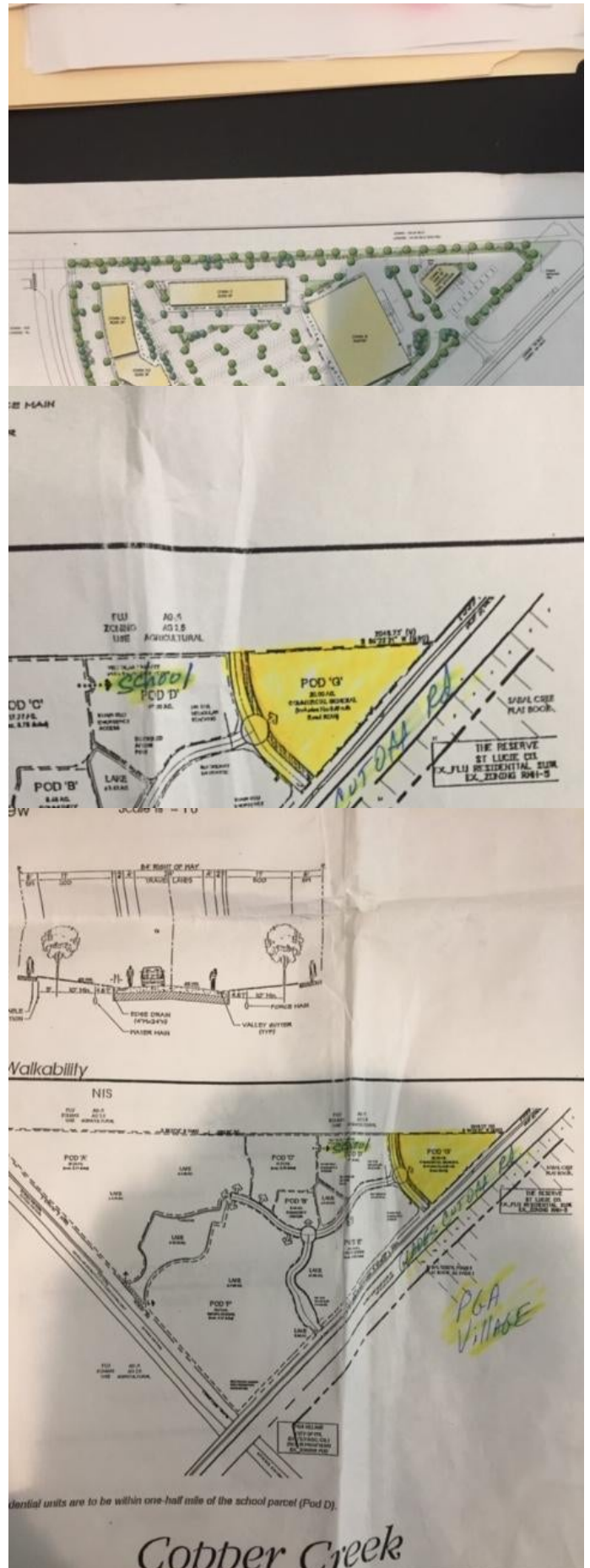
Essential Information

MLS® #	RX-10483968
Price	\$9,000,000
HOA Fees	0.00
Taxes	30053.10
Acres	17.10
Type	Land
Sub-Type	Commercial, Land
Style	No
Status	Active

Community Information

Address	11552 Glades Cut Off Road
Area	7400
Subdivision	COPPER CREEK
Development	COPPER CREEK
City	Port Saint Lucie
County	St. Lucie
State	FL
Zip Code	34986

Amenities



Utilities Electric, Public Water, Irrigated Water, Cable, Phone Line, Trash Removal

Exterior

Lot Description Freeway Access, Paved Road, Public Road, Sidewalks, West of US-1

Additional Information

Date Listed November 27th, 2018

Days on Market 2000

Zoning PUD

Listing Details

Listing Office Blue Lighthouse Realty, INC



All listings featuring the BMLS logo are provided by BeachesMLS, Inc. This information is not verified for authenticity or accuracy and is not guaranteed. Copyright ©2024 BeachesMLS, Inc.

Listing information last updated on May 19th, 2024 at 9:19pm EDT